



Laminin (Pan-Laminin)

Basement membrane; extracellular matrix

Antibody Information

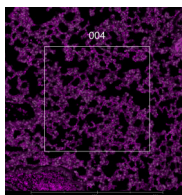
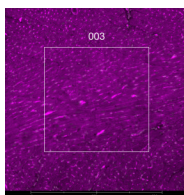
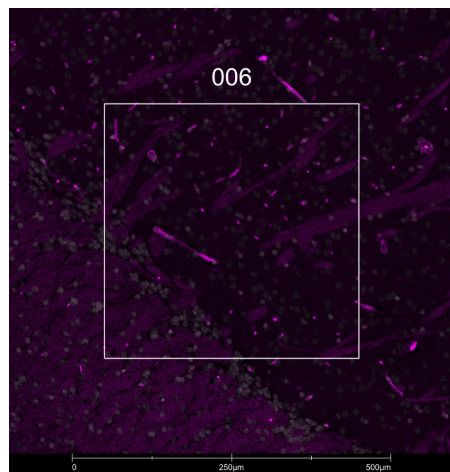
Clone ID	Polyclonal
Fluorophore	AF532
Antibody Concentration	5 µg/mL
Mono or Polyclonal	Poly
Host & Isotype	Rabbit IgG
Lot Tested	197-072321-101921-AF532

Immunofluorescent Screening Information

Tissue Type	FFPE Mouse brain, heart, lung
Section Thickness	5 µm
HIER	10 min 100°C
Proteinase K Concentration	1 µg/mL
Fixation/Embedding	FFPE

Vendor Information

Vendor	Novus
Catalog Number/Web Link	NB300-144AF532



The signal-to-noise ratio for this conjugate is not reliably high enough in our assay to allow for GeoMx segmentation. However, the expected staining pattern for Laminin (magenta) in basement membrane can still be observed by an experienced pathologist in mouse brain (left image), mouse heart (center image), and mouse lung (right image) and used to place geometric ROIs.

Legend

Laminin: magenta
SYTO13: grey

Stained Image Data

Exposure Time	300 ms
Signal-to-Noise	2.5
ROI Type	Geometric only

* Recommendations above are meant to act as a starting point for your own experimental optimization

For more information, please visit nanosttring.com/GeoMxDSP

NanoString Technologies, Inc.

530 Fairview Avenue North
Seattle, Washington 98109

T (888) 358-6266
F (206) 378-6288

nanosttring.com
info@nanosttring.com

Sales Contacts

United States us.sales@nanosttring.com
EMEA: europe.sales@nanosttring.com

Asia Pacific & Japan apac.sales@nanosttring.com
Other Regions info@nanosttring.com